

Site Profile

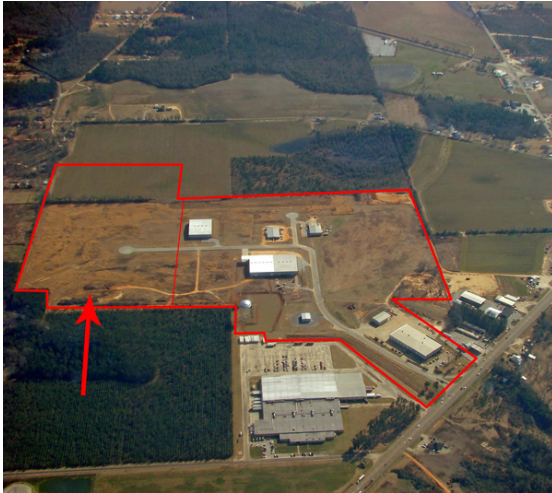


Alabama Site Selection Database

Monroeville IP East Site

City: Monroeville

County: Monroe



Site Id: 4673

Street Address Industrial Park Drive

Nearest City Monroeville

Within City Limits Yes

Zip Code 36460

Latitude 31.4738

Longitude -87.3292

Located in Industrial Park Yes

Park Name Monroeville Industrial Park

Within Enterprise Zone Yes

Within Favored Geographic Area Yes

Within Renewal Community Yes

Transportation

Rail Service

Provider:
Track Status: Not Available
Provider #2:
Track Status: Not Available

Navigable Waterway Alabama River

Dock Facility: Not Specified

Nearest Commercial Air City Mobile, AL

Miles to Nearest Service: 92

Highways

Highway Type	Highway Name	Miles to Access	Four Lane
Interstate	I-65	23.0	
Federal Highway	84	1.1	No
Alabama Highway	21	0.5	Yes
Alabama Highway	41	0.5	Yes

Price

Sale Price \$10,000.00 per acre

Land Lease Rate (Annual)

Negotiable? Yes

Date Quoted Jan 17, 2013

Price Comments

General Site Data

Total Acres	32
Available Acres	26
Additional Available	Yes
Largest Tract	26
Smallest Tract	26
Protective Covenants	Yes
Phase 1 Environmental	Yes
Preliminary Geotechnical:	Yes
Topography	Flat
Preliminary Wetlands Assessment:	Yes
Ecological Review:	Yes
Cultural Resources Review:	Yes
Zoning	Light Industrial
Previous Use	Agriculture
Previous Use Description	Farmland

Utilities

Natural Gas

Provider: South Alabama Gas
Status: < 1500ft
Size of Main: 2 in.
Main PSI: 40

Water

Provider: City of Monroeville
Status: Existing Connection
Size of Main: 12 in.

Sewer

Provider: City of Monroeville
Status: Existing Connection
Size of Main: 8 in.

Electricity

Provider #1: Alabama Power Company
Status: < 500ft
Service to Property (Distribution): Yes
Transmission: No
Provider #2:

Telecommunications

Provider: Frontier Communications
Fiber Optics: Yes
Redundancy: Yes
xDSL Available: Yes

To meet the needs of industry, Alabama's economic development community is working to designate an inventory of industrial sites with sufficient site documentation for accurate, timely project evaluation. The AdvantageSite logo indicates that this property has met requirements for program designation. For more information on AdvantageSite and program requirements, visit our website.

This information has been secured from sources we believe to be reliable; however, we make no representation or warranties, expressed or implied, as to the accuracy of the information.

Economic Development Partnership of Alabama

www.edpa.org

Site Profile



Alabama Site Selection Database

Monroeville IP East Site

City: Monroeville

County: Monroe

General Comments

Site information is current as of 1/17/13

To meet the needs of industry, Alabama's economic development community is working to designate an inventory of industrial sites with sufficient site documentation for accurate, timely project evaluation. The AdvantageSite logo indicates that this property has met requirements for program designation. For more information on AdvantageSite and program requirements, visit our website.

This information has been secured from sources we believe to be reliable; however, we make no representation or warranties, expressed or implied, as to the accuracy of the information.

Economic Development Partnership of Alabama

www.edpa.org

Site Profile

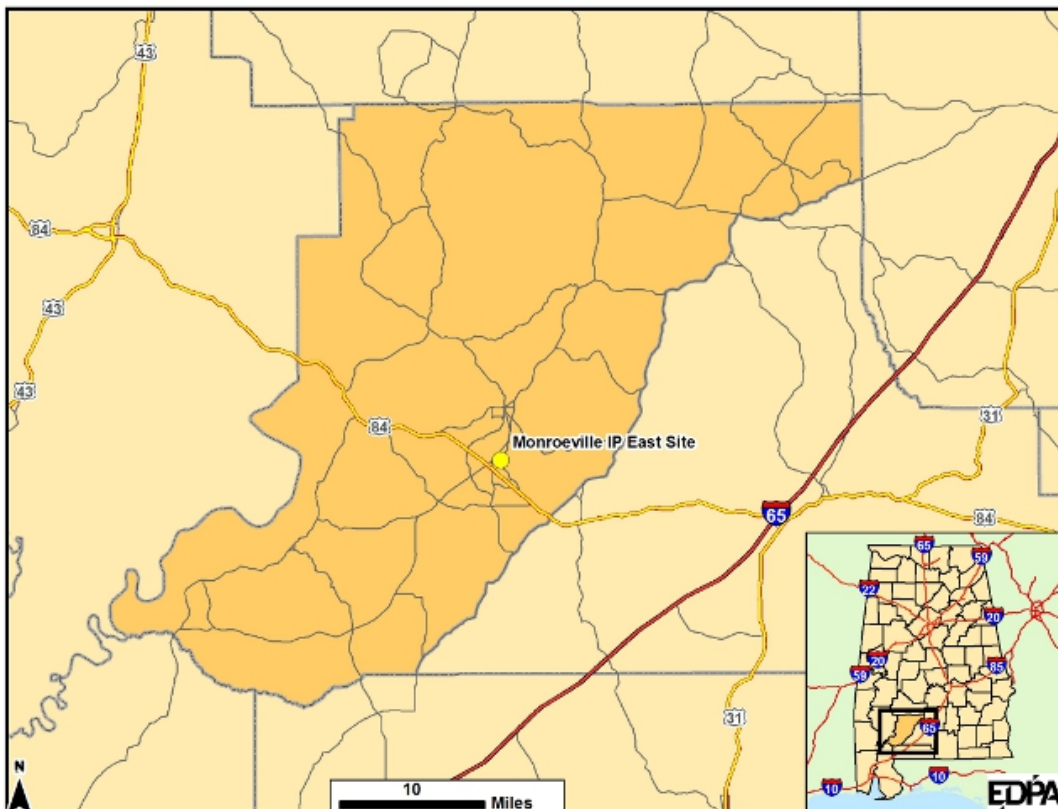
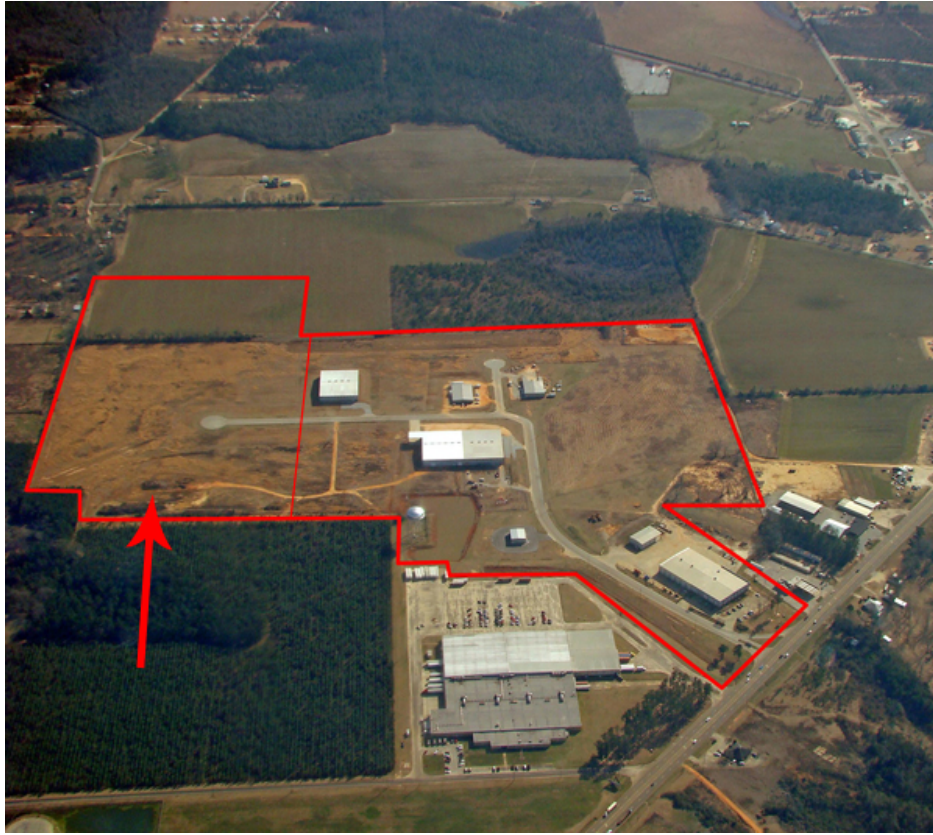


Alabama Site Selection Database

Monroeville IP East Site

City: Monroeville

County: Monroe



To meet the needs of industry, Alabama's economic development community is working to designate an inventory of industrial sites with sufficient site documentation for accurate, timely project evaluation. The AdvantageSite logo indicates that this property has met requirements for program designation. For more information on AdvantageSite and program requirements, visit our website.

This information has been secured from sources we believe to be reliable; however, we make no representation or warranties, expressed or implied, as to the accuracy of the information.

Economic Development Partnership of Alabama

www.edpa.org