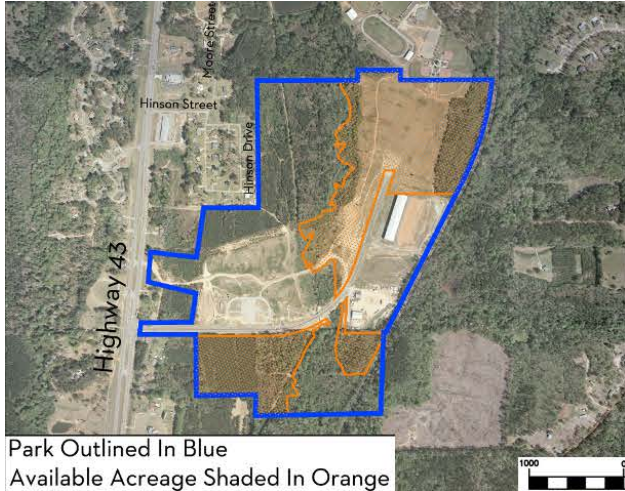


Site Profile

Alabama Site Selection Database

Thomasville South Ind Park

City: Thomasville County: Clarke



Park Outlined In Blue
Available Acreage Shaded In Orange

Site Id: 4025
Street Address: US Hwy 43, South of Thomasville

Nearest City	Thomasville
Within City Limits	Yes
Zip Code	36784
Latitude	31.8760
Longitude	-87.7453
Located in Industrial Park	Yes
Park Name	Thomasville South Ind Park
Within Enterprise Zone	Yes
Within Favored Geographic Area	
Within Renewal Community	

Transportation

Rail Service	Provider: Norfolk Southern
	Track Status: Adjacent Track
	Provider #2:
	Track Status: Not Specified

Navigable Waterway: Alabama River
Dock Facility: Port 26 to 50 miles

Nearest Commercial Air City: Mobile, AL
Miles to Nearest Service: 100

Highways

Highway Type	Highway Name	Miles to Access	Four Lane
Interstate	I-10	90.0	
Interstate	I-59	70.0	
Interstate	I-65	68.0	
Federal Highway	43	0.0	Yes
Federal Highway	80	43.0	Yes
Federal Highway	84	15.0	Yes

Price

Sale Price: \$10,000.00 per acre

Land Lease Rate (Annual):

Negotiable?: Yes

Date Quoted: Jun 14, 2012

Price Comments:

General Site Data

Total Acres	185
Available Acres	63
Additional Available	No
Largest Tract	38
Smallest Tract	1
Protective Covenants	Yes
Phase 1 Environmental	Yes
Preliminary Geotechnical:	Yes
Topography	Slight Rolling
Preliminary Wetlands	Yes
Assessment:	
Ecological Review:	Yes
Cultural Resources Review:	Yes
Zoning	Light Industrial
Previous Use	Forest
Previous Use Description	Woodlands

Utilities

Natural Gas
Provider: Clarke-Mobile Gas District
Status: Existing Connection
Size of Main: 6 in.
Main PSI: 220

Water
Provider: City of Thomasville
Status: Existing Connection
Size of Main: 12 in.

Sewer
Provider: City of Thomasville
Status: Existing Connection
Size of Main: 18 in.

Electricity
Provider #1: Alabama Power Company
Status: Existing Connection
Service to Property (Distribution): Yes
Transmission: Yes
Provider #2:

Telecommunications
Provider: AT&T
Fiber Optics: Yes
Redundancy: Yes
xDSL Available: Yes

Site Profile

Alabama Site Selection Database

Thomasville South Ind Park

City: Thomasville

County: Clarke

General Comments

Excellent publicly owned property adjacent to Norfolk Southern Rail with easy access to US Highway 43. Price negotiable for projects guaranteeing significant permanent new jobs. Contact Dottie Gaston E-mail: dgaston@thomasvilleal.com
334-636-3365

Site information is current as of 6/14/12

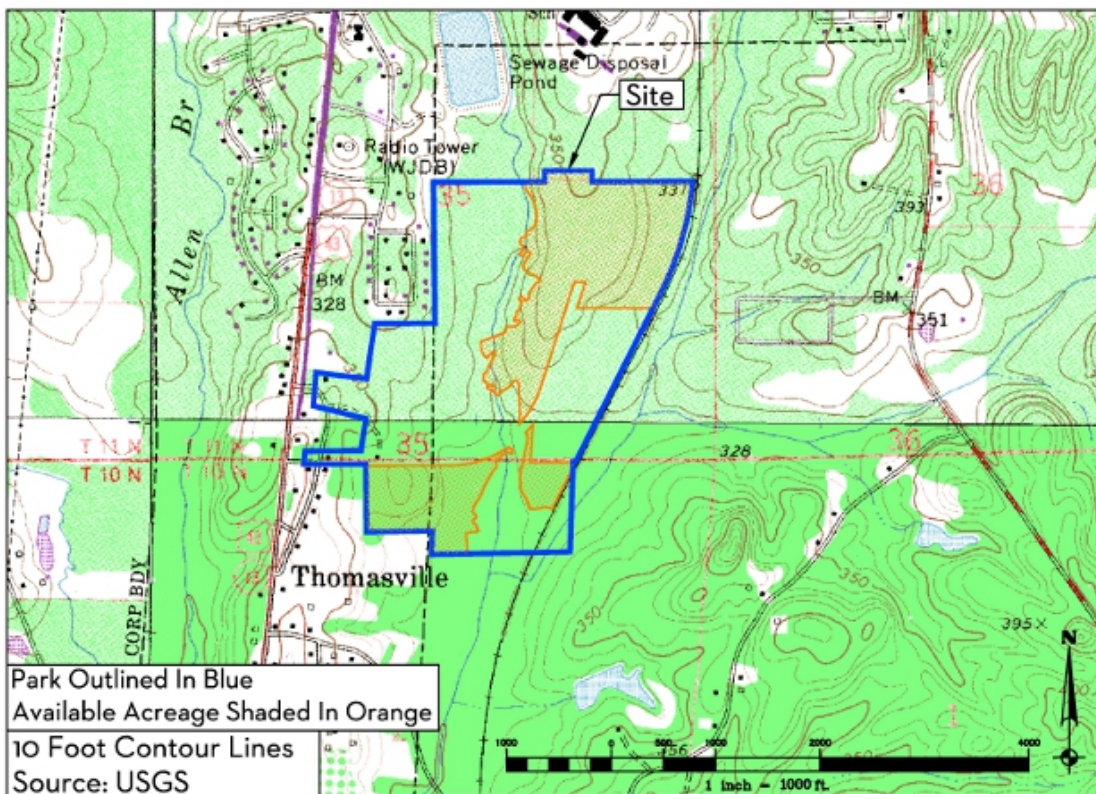
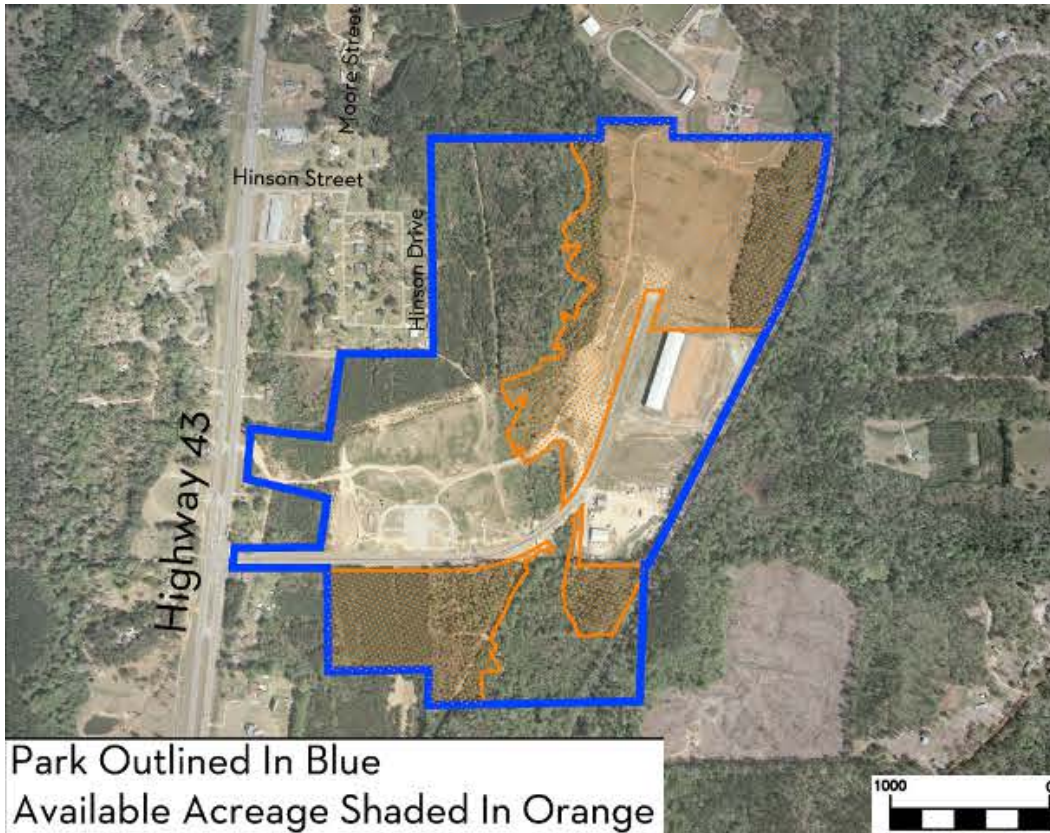
Site Profile

Alabama Site Selection Database

Thomasville South Ind Park

City: Thomasville

County: Clarke



This information has been secured from sources we believe to be reliable; however, we make no representation or warranties, expressed or implied, as to the accuracy of the information.

Economic Development Partnership of Alabama
www.edpa.org

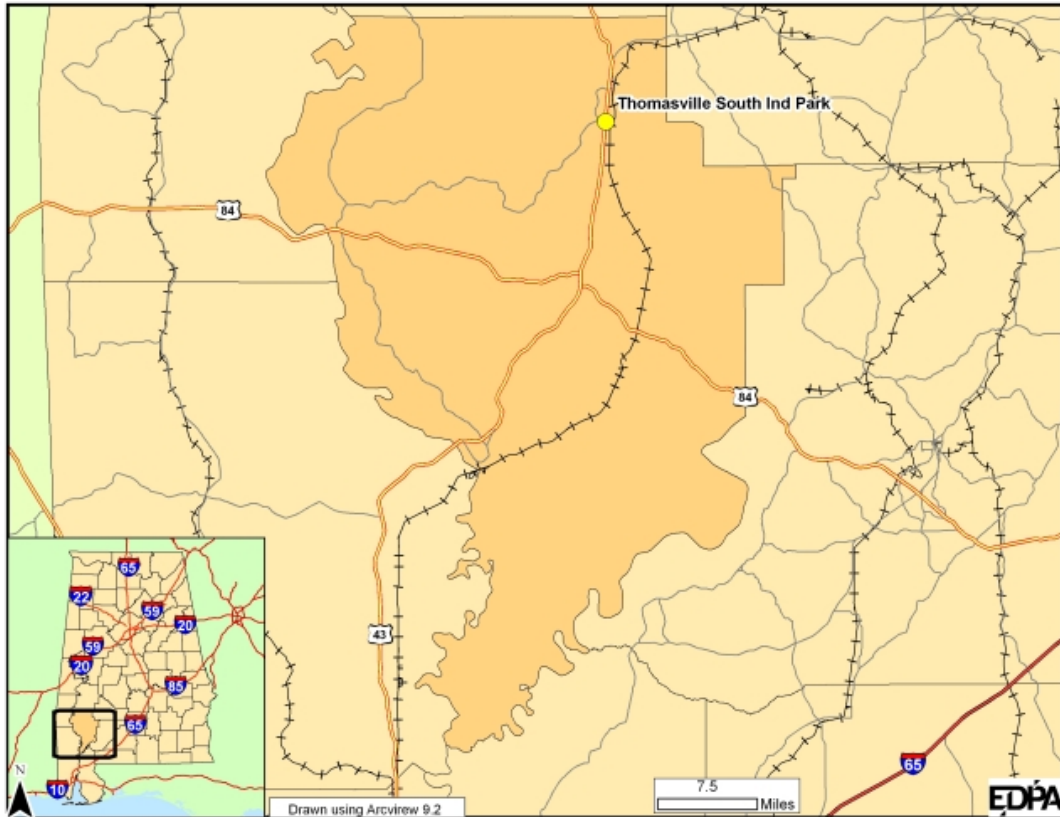
Site Profile

Alabama Site Selection Database

Thomasville South Ind Park

City: Thomasville

County: Clarke



This information has been secured from sources we believe to be reliable; however, we make no representation or warranties, expressed or implied, as to the accuracy of the information.

Economic Development Partnership of Alabama
www.edpa.org